

GMP251 GMP252

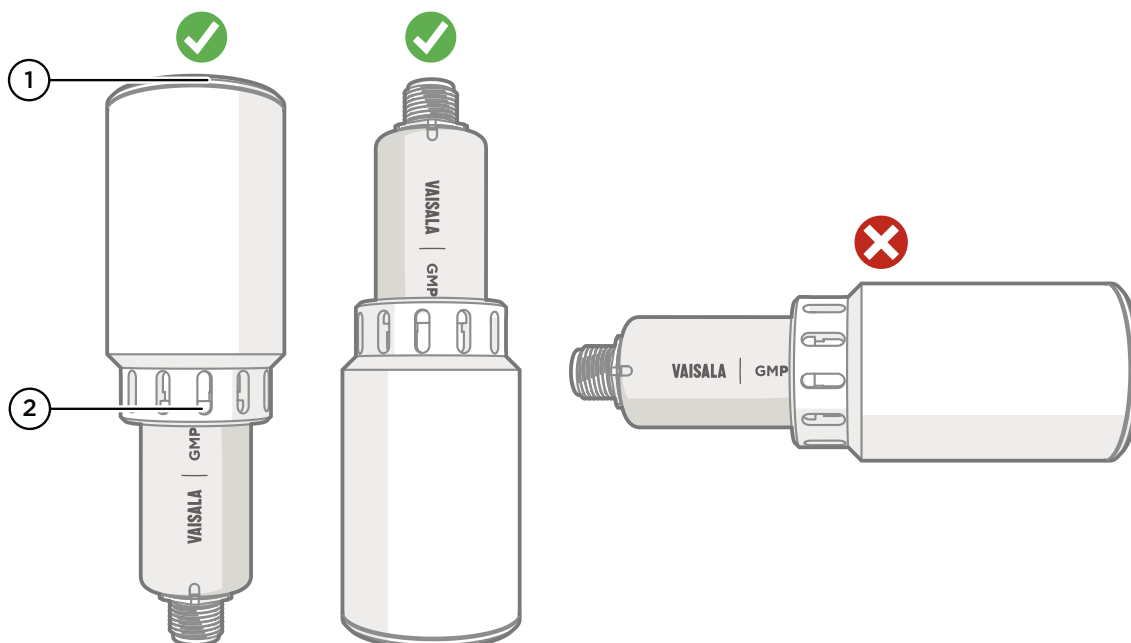
ASM212017SP Spray Shield Accessory

Spray Shield Accessory ASM212017SP

Overview

The spray shield accessory ASM212017SP protects the GMP251 and GMP252 probes in spaces where the probe can be exposed to spray from, for example, pressure washers. Typical applications include greenhouses, livestock facilities, food industry, and mushroom cultivation. The spray shield has an IP rating of IPX9 and withstands direct water spray.

Installation



- 1 Spray shield lid: remove the lid when cleaning.
- 2 O-ring: holds the shield in place on the probe body, no additional fixing required. Inspect condition when cleaning and replace the shield if the O-ring is damaged.



Always ensure that the probe and spray shield are dry and clean before installing.

1. Insert the probe into the shield by pushing gently until the top of the probe meets the shield.
2. Install the probe and shield with the probe facing either directly up or down, so water can exit the shield as intended. To avoid trapping water in the shield, do not install horizontally.



PUBLISHED BY
Vaisala Oyj
Vanha Nurmijärventie 21
FI-01670 Vantaa, Finland
Phone: +358 9 8949 1
© Vaisala 2018

VAISALA

Cleaning and Maintenance

Clean the probe and shield regularly, as required by the conditions of the installation location (cleanliness, humidity).

1. Gently pull the probe out of the shield.

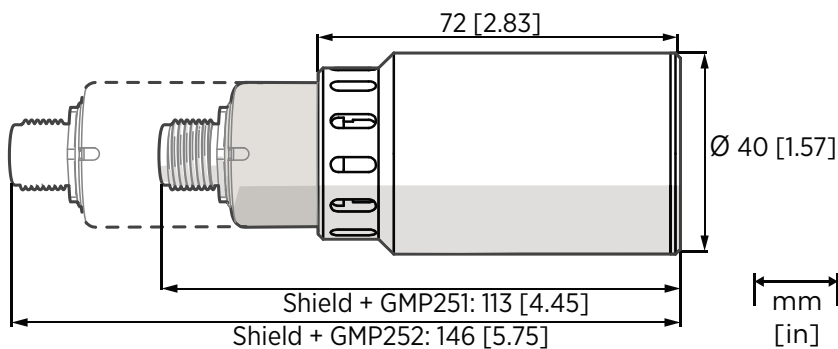
CAUTION! Hold the probe from the probe body: never pull from the cable.

2. Inspect the probe filter and replace as needed.
3. Wipe the probe body with a moist cloth.
4. Clean the spray shield with a mild, warm soap solution.
5. Rinse the shield thoroughly after cleaning and allow to dry before reinstalling.
6. Inspect the condition of the O-ring.
7. Replace the spray shield if it cannot be cleaned, or if the O-ring or the shield body is damaged.

Specifications and Dimensions

Table 1 Specifications

Property	Specification
Spray shield material	Polyoxymethylene (POM)
Weight	38 g (1.34 oz)
Operating temperature (probe and shield)	-40 ... +60 °C (-40 ... +140 °F)
Probe response time	(T90) with standard filter, no spray shield: < 1 min (GMP251 and GMP252)
	(T90) with spray shield, GMP251: < 2 min
	(T90) with spray shield, GMP252: < 3 min
Chemical tolerance (cleaning)	<ul style="list-style-type: none"> Alcohol-based cleaning agents (for example, ethanol and IPA) For other cleaning chemicals, verify compatibility before use
Probe IP rating with shield	IPX9



The spray shield can limit or prevent the use of the probe mounting clips (243257SP).